

# 2022 Annual Impact Report



## MEMBERS

- 105
- 56% full membership fees/44% assisted
- 66% women, 34% men
- 25 zip codes across Austin
- 50% in 78731, 78703, and 78704

## VOLUNTEERS

- 87 active volunteers
- 29 zip codes across Austin
- 50% — 78731, 78703, 78704, 78759
- 2658 service hours

## PROGRAMS

- 140 programs (in-person, live and hybrid)
- 1015 total attendance
- 25 avg. per program
- Most free and open to the public
- Social, educational, health, policy issues



## FINANCIALS

Income — \$147.5K  
Expenses — \$141K  
12-Month Reserve

## INCOME \$151,586

- Fundraisers \$95.6K 63%
- Member Dues \$43.4K 29%
- Grants \$5K 3%
- Donations \$7.7 5%

## EXPENSES \$146,130

- Programs and Events \$31.1K 21%
- Office Operations \$26.3K 18%
- Salaries and Taxes \$82.2K 56%
- CCV Gatherings \$6.5K 4%

## SPONSORS

Asset Strategies Group  
Austin National Financial Svcs.  
Austin Regional Clinic  
Austin Subaru

Coore & Crenshaw  
Dochen Realtors  
Engaging Wisdom  
Frost Bank  
H. E. B.

Neighbors of Austin  
Sterling Client Services  
Slavis Therapy Works  
Tarrytown United Methodist  
Westminster

## SUPPORTERS

Carl & Liby Beck  
Scott Blech  
Rick Cloud & Dell Gully  
Jim Fryer  
David & Barbara Gamble  
Gary Glass

Mart & Sue Hoffman  
Jeanne & Lew Little  
Ed, Kevin & Paul McHorse  
Tom & Kay McHorse  
Ken & Tracy Snodgrass  
Paul & Kathy Spicer

Cathy Trifiro  
Drew & Emy Lou Sawyer  
Westwood Senior Tennis Group  
Bill & Stephanie Whitehurst  
Sam & Beth Williams  
Neil Crump & Sally Van Sickle

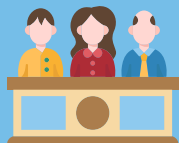


- We learned how to do online programs and safely serve members in a vulnerable time.
- We found that we could do our fundraisers in a way that still yielded income in safe and healthy ways.
- We are taking these learnings forward.
- We see 2023 as a transition time of great opportunity to understand what our members need most and to redesign our organization to best meet those needs.
- Welcome Executive Director Johanna Mandel and Board President Mart Hoffman.



*2021 Volunteer of the Year*  
Henry McCown has faithfully organized the Men's and Women's Lunch since "the beginning".

50 members received volunteer services in 2022, ranging from 5 minutes of phone check-in to 147 hours of trips.



Hardworking committees—finance, marketing, program, welcome, volunteer, KAW, and Golf Tournament. 52% of CCV total volunteer time.



## MEMBER EXPERIENCE

Donna Bryant Goertz



Wow! What a treat it was having Derrick call immediately after my request and then show up to help me just 10 min. later! My plants love being outside—until they don't! I found an affordable kit that assembled into a shelving to hold them all off the floor. When it arrived it was in a hundred little pieces requiring long and tedious and complicated assembly. Aha!

Derrick didn't blink an eye. He just set about assembling the pieces into shelving and then assembling the shelving into standing shelf. It was a wonder to behold! I expected Derrick to assemble one set of shelving but he opened the second box and assembled it as well.

The day was wet and gray. I have a close and dear family member in the hospital with a serious and undiagnosed illness. Having Derrick cheerily tapping pieces together did my heart good.

## CAPITAL CITY VILLAGE

3710 Cedar St., Suite 283, Austin, TX 78705  
512-524-2709 [www.capitalcityvillage.org](http://www.capitalcityvillage.org) [info@capitalcityvillage.org](mailto:info@capitalcityvillage.org)  
501c3 Non-Profit (Tax ID: 27-0539952)